

# 301.7D Mini Hydraulic Excavator Specifications

## Engine

Engine Model	Yanmar 3TNV76	
Rated Net Power @ 2,200 rpm (ISO 9249)	13.2 kW	17.7 hp
Gross Power (ISO 14396)	17.9 kW	24.3 hp
Displacement	1116 cm <sup>3</sup>	40 in <sup>3</sup>

## Weights

Operating Weight with Canopy	1610 kg	3,550 lb
Operating Weight with Cab	1720 kg	3,792 lb
Operating Weight with Canopy and Extending Undercarriage	1735 kg	3,825 lb
Operating Weight with Cab and Extending Undercarriage	1845 kg	4,068 lb

## Travel System

Travel Speed	2.8 km/h/ 5.6 km/h	1.74 mph/ 3.48 mph
Gradeability	30°/58%	

## Service Refill Capacities

Fuel Tank Capacity	24 L	6.3 gal
Hydraulic Tank Capacity	21 L	5.5 gal

## Operating Specifications

Stick Length – Standard	980 mm	39.6 in
Stick Length – Long	1180 mm	46 in
Machine Overhang	495 mm	19.5 in

## Blade

Width	990 mm	39 in
Height	230 mm	9 in
Dig Depth – Standard Blade	317 mm	12.5 in
Lift Height – Standard Blade	197 mm	8 in

## Hydraulic System

Pump Flow @ 2,200 rpm	6.4 L/min	1.7 gal/min
Operating Pressure – Equipment	200 bar	2,900 psi
Operating Pressure – Travel	200 bar	2,900 psi
Operating Pressure – Swing	125 bar	1,813 psi
Auxiliary Circuits		
Primary	30 L/min at 170 bar	8 gal/min at 2,465 psi
Secondary	17 L/min at 200 bar	4.5 gal/min at 2,900 psi
Maximum Bucket Force	18.8 kN	4,226 lbf
Maximum Stick Force – Standard Stick	11.2 kN	2,518 lbf
Maximum Stick Force – Long Stick	9.8 kN	2,203 lbf

## Lift Capacity at Ground Level

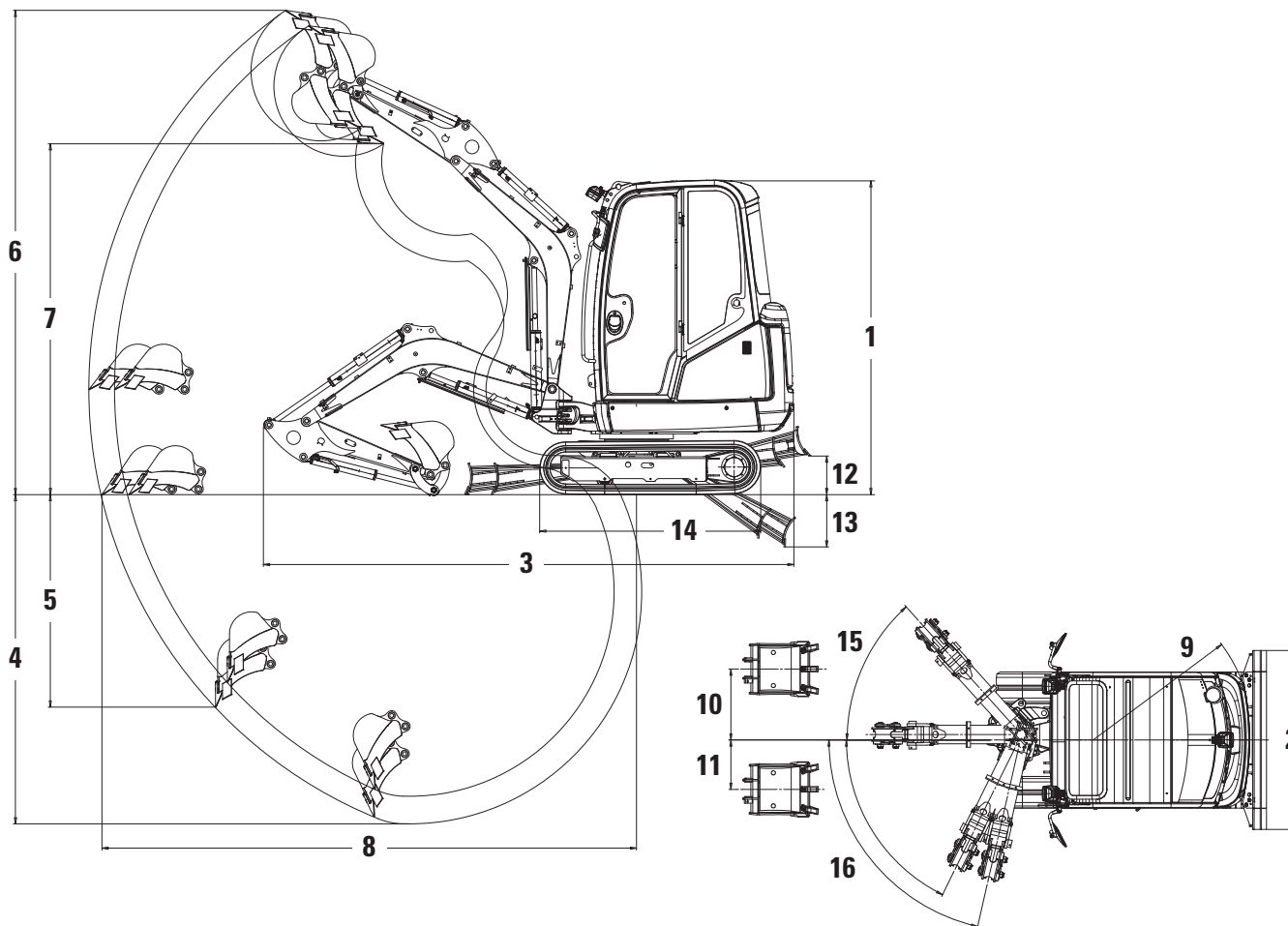
Lift Point Radius	2 m (6'7")				2.5 m (8'2")				3 m (9'10")				Maximum			
	Front		Side		Front		Side		Front		Side		Front		Side	
	kg	lb	kg	lb	kg	lb	kg	lb	kg	lb	kg	lb	kg	lb	kg	lb
Long Stick/ Fixed Undercarriage	835*	1,840*	580	1,279	605*	1,334*	400	882	470*	1,036*	325	717	440*	970*	300	661

\*The above loads are in compliance with hydraulic excavator lift capacity rating standard ISO 10567:2007 and they do not exceed 87% of hydraulic lifting capacity or 75% of tipping capacity. The excavator bucket weight is not included on this chart.

# 301.7D Mini Hydraulic Excavator Specifications

## Dimensions

All dimensions are approximate.



	Standard Stick		Long Stick	
<b>1</b> Height	2290 mm	7'5"	2290 mm	7'5"
<b>2</b> Width	990 mm	3'3"	990 mm	3'3"
Undercarriage Width (Retracted)	990 mm	3'3"	990 mm	3'3"
Undercarriage Width (Extended)	1300 mm	4'3"	1300 mm	4'3"
<b>3</b> Transport Length (arm lowered)	3855 mm	12'8"	3855 mm	12'8"
<b>4</b> Maximum Digging Depth	2200 mm	7'3"	2400 mm	7'11"
<b>5</b> Maximum Vertical Dig Depth	1430 mm	4'8"	1620 mm	5'4"
<b>6</b> Maximum Dig Height	3485 mm	11'5"	3595 mm	11'9"
<b>7</b> Maximum Dump Height	2500 mm	8'3"	2610 mm	8'7"
<b>8</b> Maximum Reach at Ground Level	3700 mm	12'2"	3895 mm	12'9"
<b>9</b> Tail Swing Radius	1170 mm	3'10"	1170 mm	3'10"
<b>10</b> Maximum Boom Offset (RH)	520 mm	1'8"	520 mm	1'8"
<b>11</b> Maximum Boom Offset (LH)	360 mm	1'2"	360 mm	1'2"
<b>12</b> Maximum Dozer Lift Height	200 mm	8"	200 mm	8"
<b>13</b> Maximum Dozer Dig Depth	320 mm	1'0"	320 mm	1'0"
<b>14</b> Length of Undercarriage (Fixed)	1445 mm	4'9"	1445 mm	4'9"
<b>14</b> Length of Undercarriage (Extending)	1600 mm	5'3"	1600 mm	5'3"
<b>15</b> Boom Swing Angle (RH)	48°		48°	
<b>16</b> Boom Swing Angle (LH)	77°/64°		77°/64°	